

TOWN OF FIRESTONE NEW MS4

Do You Want Clean Water in Your Community?

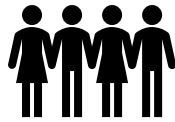
Impacts of Stormwater Discharge

Stormwater runoff occurs when water from rain or snowmelt flows over the ground. Impervious surfaces such as driveways, sidewalks and streets prevent stormwater from naturally soaking into the ground.

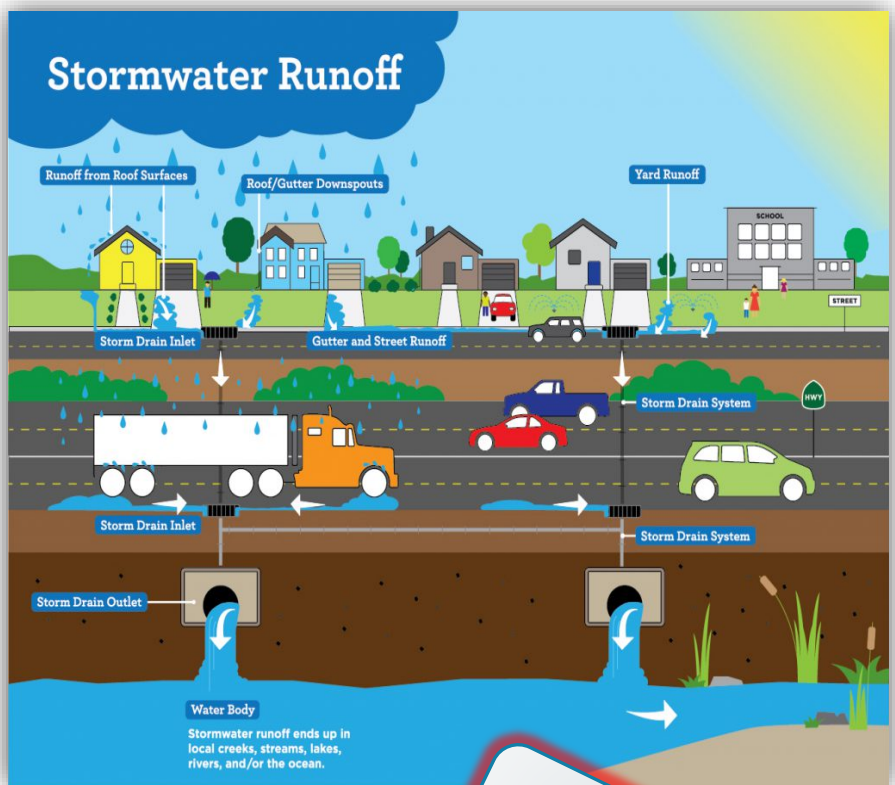
Most stormwater runoff flows either:

Directly into streams, rivers, ponds, lakes and wetlands

Down the nearest storm drain into the nearest waterway without any treatment



The Town of Firestone is continually growing, now exceeding a population of more than 10,000 residents. Because of this, the town is required to manage stormwater quality and mitigate common pollutant sources using the **Municipal Separate Storm Sewer System (MS4)**.



Improper Disposal of Waste Impacts Water

Residents

Residents contribute to water pollution by:

Leaving grass clippings or fertilizer spills on driveways, sidewalks and streets

Using fertilizer that has phosphorous and nitrogen in its formula

Leaving pet waste on grass

Businesses

Businesses contribute to water pollution by:

Improper disposal or spills of oil, gasoline, grease, antifreeze, chemicals, etc.

Generating trash and debris that aren't managed properly and spill into sidewalks and streets

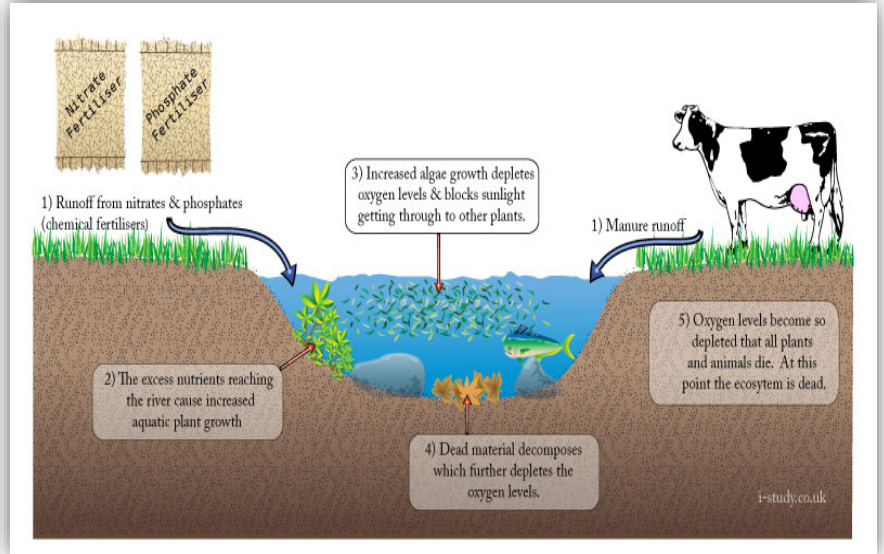


STORM WATER HOTLINE

303-833-3544

Eutrophication

The resulting increase of **nitrogen** and **phosphorous** in the water encourages algae growth, which forms a bloom over the water surface. This prevents sunlight reaching other water plants, which then die. Bacteria break down the dead plants and use up the oxygen in the water, so fish and other live organisms cannot live any longer.



What Steps Can YOU Take?

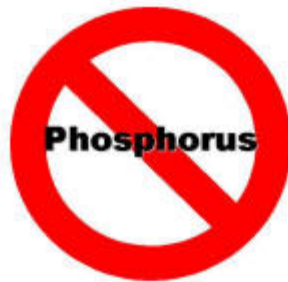


Pet Waste:
Scoop the poop, bag it, and put it in the garbage

Fertilizer:
Use no-phosphorous fertilizers on lawns and gardens

Manage Nutrients:
Follow nutrient management plans to ensure efficiencies

Vehicles:
Have car oil leaks fixed and take your car to a commercial car wash



Remember, it's *illegal* to pollute waterways in Colorado

Learn More At:

<https://www.firestoneco.gov/490/Stormwater>



STORM WATER HOTLINE

303-833-3544