

Hello,

We will be starting the next phase of development on the Cowboy 1-21HZ, Reese 5-21HZ, Ruca 1-20HZ well pads that were drilled near your community. We anticipate this activity to begin around early March and to last until early June.

We previously performed Phases 1 - 3 and will now be working on Phases 4 - 6 to complete the wells, so they can begin producing oil and natural gas. In order to complete these wells safely and efficiently, and to help reduce the amount of time we are in your community, there will be two crews working simultaneously at these locations. On the back of this letter, you will find a map showing the locations of the well pads. You will also find enclosed a flier outlining the different phases of new energy development.

The fourth phase of development is the completions phase and is commonly referred to as hydraulic fracturing or "fracking." This is a highly engineered process of injecting a mixture of 90% water, 9.5% sand and a small percentage of additives through multiple layers of steel pipe and cement into the rock more than a mile beneath the earth's surface. Fracking creates tiny cracks (the width of a single hair) that enable oil and natural gas to flow from the rock through the wellbore. Once this process is complete, the wells will produce enough oil and natural gas to energize our lives for decades. For more information on fracking, please visit www.anadarko.com/fracking.

You may have seen our team members already on site as they prepare the location for the hydraulic fracturing phase of development, and you may also see a temporary increase in traffic through the duration of this activity. All of our operations are planned with health, safety and the environment as top priorities. We strive to make our activity as compatible as we can with the surrounding community and use a variety of mitigation techniques to reduce the temporary impacts this activity may cause.

If at any time you would like additional information or wish to report an issue related to our operations, you can reach us through the Anadarko Colorado Response Line. We welcome your feedback at any time as we perform work in your community.

Sincerely,
Anadarko Stakeholder Relations Team

Anadarko Colorado Response Line: Monday - Friday 7:00 a.m. - 4:00 p.m.

Phone: 866-248-9577

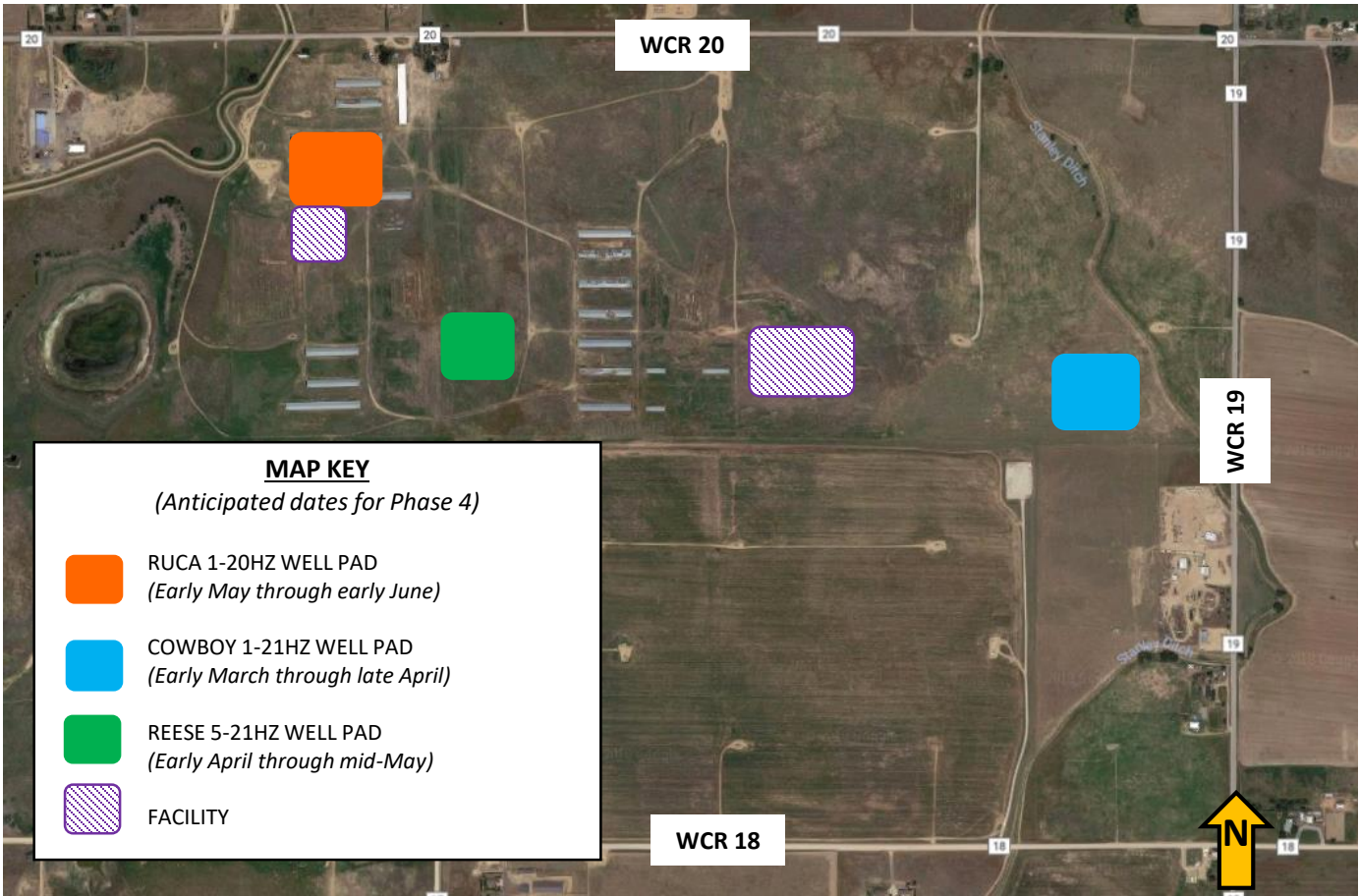
Email: AnadarkoColorado@anadarko.com

After-Hours: 970-506-5980







AREA OF OPERATIONS IN WELD COUNTY

When you contact us, please reference this activity by the following names:
COWBOY 1-21HZ, REESE 5-21HZ, RUCA 1-20HZ



MAP KEY

(Anticipated dates for Phase 4)

-  RUCA 1-20HZ WELL PAD
(Early May through early June)
-  COWBOY 1-21HZ WELL PAD
(Early March through late April)
-  REESE 5-21HZ WELL PAD
(Early April through mid-May)
-  FACILITY



Anadarko
Colorado Response Line
1.866.248.9577
anadarkocolorado
@anadarko.com

For more information on oil and natural gas development, visit:

www.cred.org
www.studyfracking.com



Scan this QR Code with your smart phone to see our Life Cycle of a Well video on www.youtube.com/AnadarkoTV



www.anadarko.com/colorado